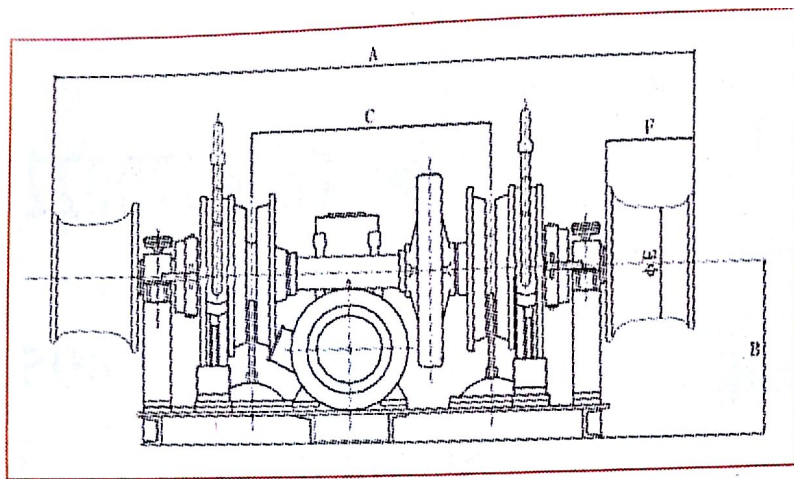


电动起锚机 Electric Anchor Windlass

锚链直径 Chain Dia.	工作负载 Working Load(kN)		过载拉力 Over Loading(kN)		支持负载 Loading Support(kN)		公称速度 Nominal Speed(m/min)	系缆负载 Mooring Load(kN0)
	AM2	AM3	AM2	AM3	AM2	AM3		
17.5	13	14.6	19.5	21.9	80	115	9	8
20	17.9	20	26.9	30	110	157	9	10
24	24.5	27.4	36.8	41.1	149	214	9	20
28	33.3	37.2	50	55.8	202	289	9	20
30	38.3	42.8	57.5	64.2	231	330	9	30
34	49.1	54.9	73.3	82.4	294	421	9	30
38	61.4	68.9	92.1	103.4	365	522	9	40
40	68	76	102	114	402	576	9	40
44	82.3	92	123.5	138.0	483	691	9	50
50	106.3	118	159.5	178.2	617	882	9	50



Code: 170030

☼ 供应商: 2510

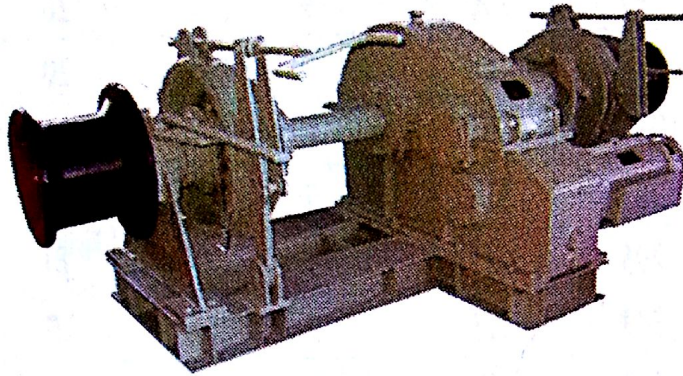
☼ Supplier: 2510

电动起锚机 Electric Windlass

型号 Type	链径 Chain Dia. (φ mm)	工作负载 Work Load (kN)	过载拉力 Overload Pulling Force (kN)	速度 Speed (r/min)	抛锚深度 Depth (m)
DMA12.5/14	φ 12.5/14	6.6/8.3	41.5/52	9	45
DMA16/17.5	φ 16/17.5	10.9/13	67.5/81	9	45
DMA19/22	φ 19/22	15.3/20.6	95/126	9	82.5
DMA24/26	φ 24/26	24.5/28.7	149/175	9	82.5
DMA28/30	φ 28/30	33.3/38.3	202/231	9	82.5
DMA32/36	φ 32/36	43.5/55.1	262/329	9	82.5
DMA38/40	φ 38/40	61.4/68	365/403	9	82.5
DMA42/46	φ 42/46	75/89.9	442/527	9	82.5
DMA48	φ 48	97.9	572	9	82.5

型号 Type	外形尺寸 Dimension (mm)					电动机 Motor	
	A	B	C	φ E	F	Type	Power (kW)
DMA12.5/14	1400	400	500	280	238	JZ ₂ -H22-4/12	3/1.2
DMA16/17.5	1475	450	550	280	238	JZ ₂ -H23-4/12	4.7/1.7
DMA19/22	1915	600	600	325	300	JZ ₂ -H33-4/12	8.5/3.5
DMA24/26	2295	600	750	325	300	JZ ₂ -H33-4/12	8.5/3.5
DMA28/30	2525	680	880	350	325	JZ ₂ -H42-4/8/16	11/11/7.5
DMA32/36	2880	680	950	350	325	JZ ₂ -H51-4/8/16	16/16/11
DMA38/40	3225	850	1180	350	325	JZ ₂ -H52-4/8/16	22/22/16
DMA42/46	3650	850	1600	500	418	JZ ₂ -H61-4/8/16	30/30/22
DMA48	3650	900	1600	500	418	JZ ₂ -H61-4/8/16	30/30/22

⚓ Notes: Certificate CCS.



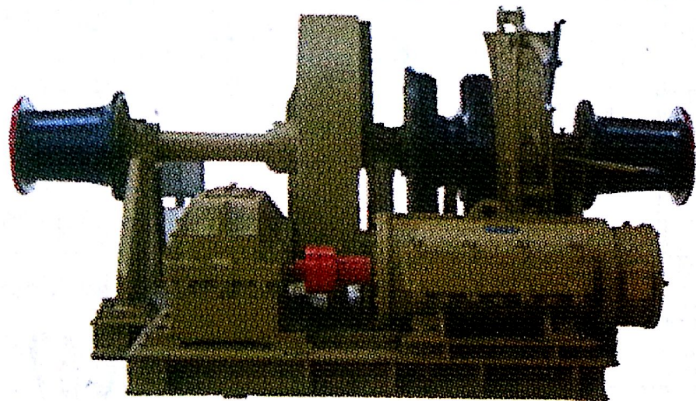
Code: I70047

☼ 供应商: 2371
 ☼ Supplier: 2371

对称式电动起锚机 Symmetrical Type Electric Windlass

型号 Type	链径 Chain Dia.(mm)	工作负载Working Load(kN)		支持负载Supporting Load(kN)		速度 Speed(r/min)
		AM2	AM3	AM2	AM3	
DMA-17.5	17.5	13	14.6	80	115	9
DMA-19	19	15.3	17.2	95	135	9
DMA-20	20	17.9	20.0	110	157	9
DMA-22	22	20.6	23.0	126	180	9
DMA-24	24	24.5	27.4	149	214	9
DMA-26	26	28.7	32.1	175	250	9
DMA-28	28	33.3	37.2	202	289	9
DMA-30	30	38.3	42.8	231	330	9
DMA-32	32	43.5	48.6	261	374	9
DMA-34	34	49.1	54.9	294	421	9
DMA-36	36	55.1	61.6	329	470	9
DMA-38	38	61.4	68.9	365	522	9
DMA-40	40	68.0	76.0	402	576	9
DMA-42	42	75.0	83.8	442	632	9
DMA-44	44	82.3	92.0	483	691	9
DMA-46	46	89.9	100.5	526	753	9
DMA-48	48	97.9	109.4	570	816	9
DMA-50	50	106.3	118.8	617	882	9

⚓ Notes: Certificate ABS, BV, CCS, DNV, GL, KR, LR, NK.



Code: I70064

☼ 供应商: 2095
☼ Supplier: 2095

电动(液压)起锚机 Electric (Hydraulic) Anchor Windlass

链径 Chain Dia.(mm)	工作负载 Working Load (kN)	起锚速度 Working Speed(r/min)
12.5	5.9	≥9
14/16/17.5	8.3/10.9/13.0	≥9
19/20.5/22	15.3/17.9/20.6	≥9
24/26	24.5/28.7	≥9
28/30	33.3/38.3	≥9
32/34/36	43.5/49.1/55.1	≥9
38/40/42	61.4/68.0/75.0	≥9
44/46/48	82.3/89.9/97.9	≥9
50/52/54	106.3/114.9/123.9	≥9

链径 Chain Dia.(mm)	工作负载 Working Load (kN)	起锚速度 Working Speed(r/min)
56/58/60	133.3/143.0/153	≥9
62/64	163.4/174.1	≥9
66/68	185.1/196.5	≥9
70/73	208.3/226.5	≥9
76/78	245.5/258.6	≥9
81/84	311.7/335.2	≥9
87/90	359.5/384.8	≥9
92/95	402.0/428.7	≥9
97/100	446.9/475.0	≥9

↓ Notes: Certificate ABS, BV, CCS, DNV, GL, KR, KR, NK, RINA.